

STRAIGHT THROUGH JOINT BOXES SAKOP 1/...BiT and SAKOP 8/...BiT to connect cabtyre conductors with two shields

The product is approved for application both on surface and in underground workings of mining operations

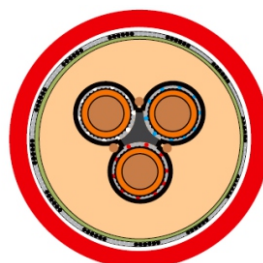
APPLICATION AREA

Designed to make connections between cabtyre conductors with two shields and classified to the following types:

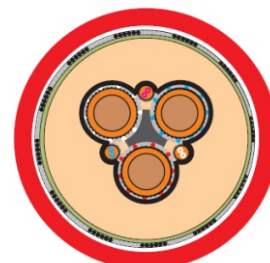
- BiTflex OnGcekż/w-GW 3.6/6 kV from Bitner
- BiTflex O2nGcekż/w-GW 3.6/6 kV from Bitner
- BiTflex (a) OnGcekż/w-GW 3.6/6 kV from Bitner
- BiTflex (a) O2nGcekż/w-GW 3.6/6 kV from Bitner
- O2nGcekż/w-GW 3.6/6 kV from Bitner
- OnGcekż/w-GW, O2nGckż/w-GW 3.6/6 kV from TF Kable

TECHNICAL PARAMETERS

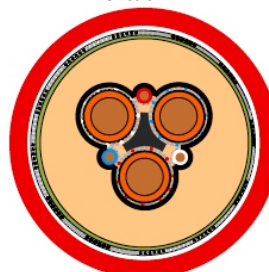
- Working cores of cables and the overall shield are connected by means of bolted terminals with secure (sheared head) bolts
- Auxiliary cores are connected by means of bolted terminals
- Individual shields of cores are restored by means of tape made of copper mesh
- Outer sheath of the joint box is made of flame retardant soft PVC (SAKOP 1/... – BiT) or polycarbonate resistant to flame propagation (SAKOP /...BiT) and then filled with two-component polyurethane compound jacketing tape and resin, i.e. the area of cable joint is wrapped with polypropylene mesh, then with sealing tape and surface finishing tape and finally the inner space is filled with two-component polyurethane compound
- Each kit comprises all components and instruction manuals for making the joint



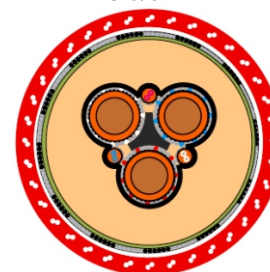
4-core conductor
BiTflex OnGcekż/w-GW
3.6/6kV



10-core conductor
BiTflex OnGcekż/w-GW
3.6/6kV

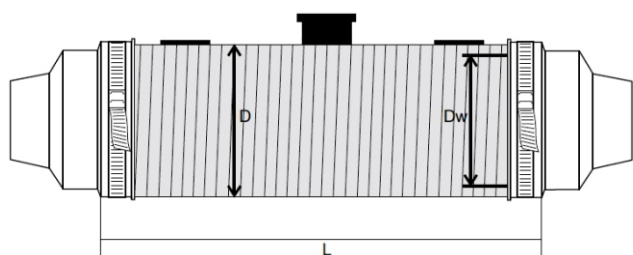


6-core conductor
BiTflex OnGcekż/w-GW
3.6/6kV

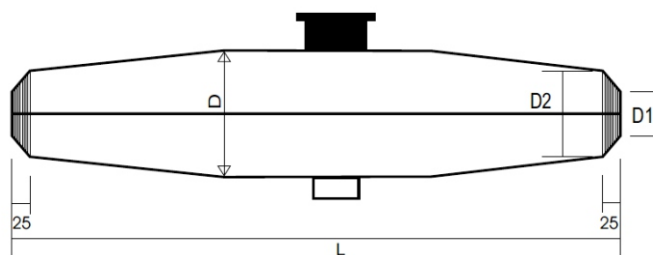


10-core conductor
BiTflex O2nGcekż/w-GW
3.6/6kV

SPECIFICATION



SAKOP 1/... – BiT shell



SAKOP 8/... – BiT split shell

| | SAKOP 1/1 BiT | SAKOP 1/2 BiT | SAKOP 1/3 BiT |
|-------------------|--------------------------|--------------------------|---------------------------|
| L | 400 mm | 500 mm | 800 mm |
| D | 90 mm | 105 mm | 143 mm |
| D _w | 80 mm | 90 mm | 125 mm |
| Application range | Up to 35 mm ² | Up to 70 mm ² | Up to 120 mm ² |

| | SAKOP 8/1 BiT | SAKOP 8/2 BiT | SAKOP 8/3 BiT |
|-------------------|--------------------------|--------------------------|---------------------------|
| L | 450 mm | 550 mm | 850 mm |
| D | 80 mm | 100 mm | 130 mm |
| D ₁ | 27 mm | 35 mm | 57 mm |
| D ₂ | 60 mm | 72 mm | 80 mm |
| Application range | Up to 35 mm ² | Up to 70 mm ² | Up to 120 mm ² |

v.2