

STRAIGHT THROUGH CABLE JOINTS

SAKOP 1/... - PROTOMONT AND SAKOP 8/... - PROTOMONT

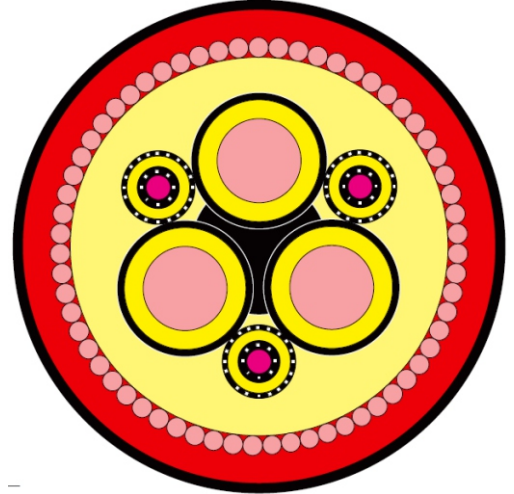
to connect cable conductors with two shields

The product is approved for application both on surface and in underground workings of mining operations

APPLICATION AREA

Designed to make connections between cable conductors with two shields and classified to the following types:

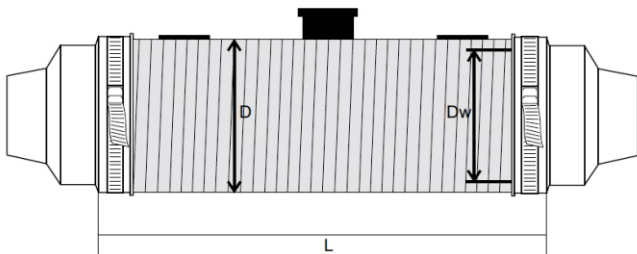
- PROTOMONT NTSKCGECWUEU for the rated voltage up to 3.6/6 kV
- PROTOMONT(V) NTSKCGECWUEU for the rated voltage up to 3.6/6 kV
- PROTOMONT NSSHCGEUEU for the rated voltage up to 0.6/1 kV
- PROTOMONT(V) NSSHCGEUEU for the rated voltage up to 0.6/1 kV
- PROTOMONT(Z) NSSHCGEUEU for the rated voltage up to 0.6/1 kV
- TENAX(V) NSSHCGEUEU for the rated voltage up to 0.6/1 kV
- TENAX(Z) NSSHCGEUEU for the rated voltage up to 0.6/1 kV



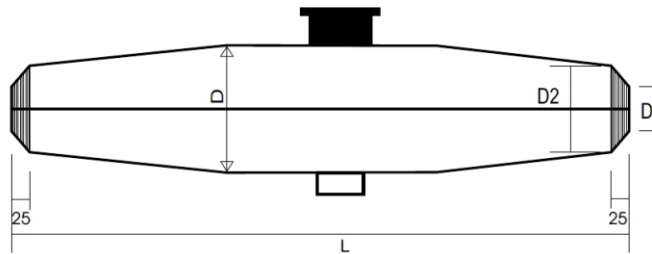
TECHNICAL PARAMETERS

- Working cores of cables and the overall shield are connected by means of bolted terminals with secure (sheared head) bolts
- Auxiliary cores are connected by means of Cu terminals /connectors
- Individual shields of cores are restored by means of tape made of copper mesh
- Outer sheath of the joint box is made of flame retardant soft PVC (SAKOP 1/... – PROTOMONT) or polycarbonate that is resistant to flame propagation (SAKOP 8/... PROTOMONT) and then filled with two-component polyurethane compound
- Each kit comprises all components and instruction manuals for making the joint

SPECIFICATION



SAKOP 1/... – PROTOMONT SHELL



SAKOP 8/... – PROTOMONT SPLIT SHELL

	SAKOP 1/1 PROTOMONT	SAKOP 1/2 PROTOMONT	SAKOP 1/3 PROTOMONT
L	400 mm	500 mm	800 mm
D	90 mm	105 mm	143 mm
D _w	80 mm	90 mm	125 mm
Application range	Up to 50 mm ²	Up to 70 mm ²	Up to 150 mm ²

	SAKOP 8/1 PROTOMONT	SAKOP 8/2 PROTOMONT	SAKOP 8/3 PROTOMONT
L	450 mm	550 mm	850 mm
D	80 mm	100 mm	130 mm
D ₁	27 mm	35 mm	57 mm
D ₂	60 mm	72 mm	80 mm
Application range	Up to 50 mm ²	Up to 70 mm ²	Up to 150 mm ²