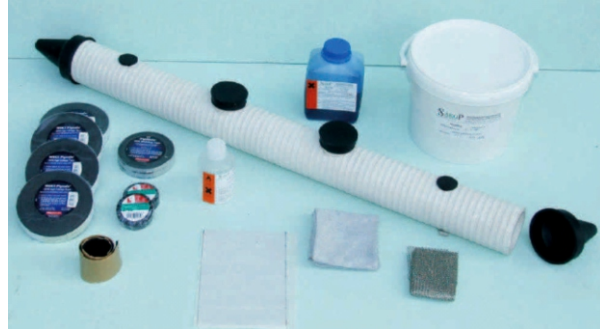


STRAIGHT THROUGH JOINT BOX SAKOP M-20(24)X FOR VOLTAGES UP TO 12/20(24) kV

The product is in compliance with Polish Standard
Technical approval issued by Institute of Power Engineering from Warsaw

APPLICATION AREA

- The kit for connection of one core electric power cables designed for rated voltages 6/10 kV, 8.7/15 kV and 12/20 kV and protected with insulation of thermoplastic PE of YH(A)KX type as well as cables with cross-linked PE of YH(A)KXS, XUH(A)KXS, X(RU)H(A)KXS ... types.
- Enables connections between cables with different cross-section of working cores ranging from 50 to 240 mm²
- Maximum geometrical cross-section of return lines made up of copper wires is 50 mm²
- Suitable for direct burying into ground



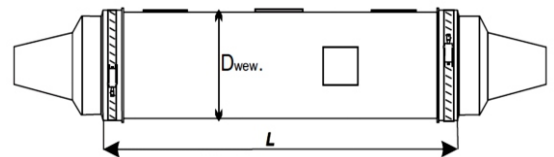
TECHNICAL PARAMETERS

- Working cores can be connected together by means of crimped terminals or terminals with secure lock bolts (supplied upon request)
- Cable insulation is restored with self-bonding adhesive tape for high voltages
- Non-metallic cable shields are restored with semi-conductive self-bonding adhesive tape
- Wires of return lines are connected by means of a crimped terminal or a terminal with secure lock bolts (supplied upon request)
- Outer shell is made of flame-retardant soft PVC and flame-retardant rubber and filled with two-component PU compound
- Each kit comprises all components and instruction manuals for making the joint
- The joint box can be connected to live voltage right after installation

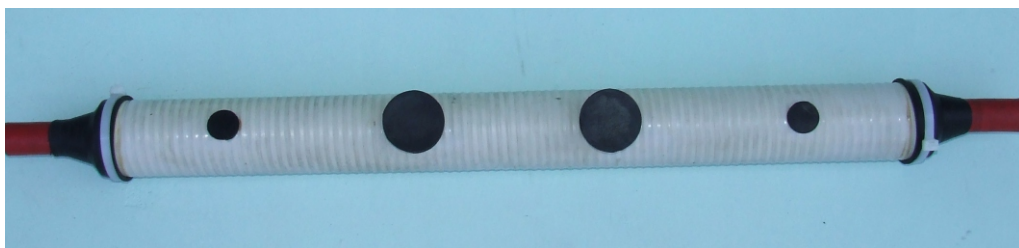
SPECIFICATION

Type	Cross-section [mm ²]	Outer sheath L[mm], DI (D _{wew}) [mm]
SAKOP M-20(24)X-1	50 - 70	L-800, DI (D _{wew})-63
SAKOP M-20(24)X-2	95 - 120	L-800, DI (D _{wew})-63
SAKOP M-20(24)X-3	150 - 240	L-800, DI (D _{wew})-80

For larger cross-sections of cables please consult the manufacturer



COMPLETED JOINT BOX



v.2