

STRAIGHT THROUGH JOINT BOX SAKOP M-20(24)PT FOR VOLTAGES UP TO 12/20(24) kV

The product is in compliance with Polish Standard
Technical approval issued by Institute of Power Engineering from Warsaw

APPLICATION AREA

- The kit for connection of three core electric power cables designed for rated voltages 8.7/15 kV and 12/20 kV wrapped with paper insulation and coated with lead armour of the HAKnFtA, HKnFtA, HKnFty, HAKnFty and HAKny... types
- Enables connections between cables with different cross-sections of working cores ranging from 35 to 240 mm²
- Suitable for direct burying into ground



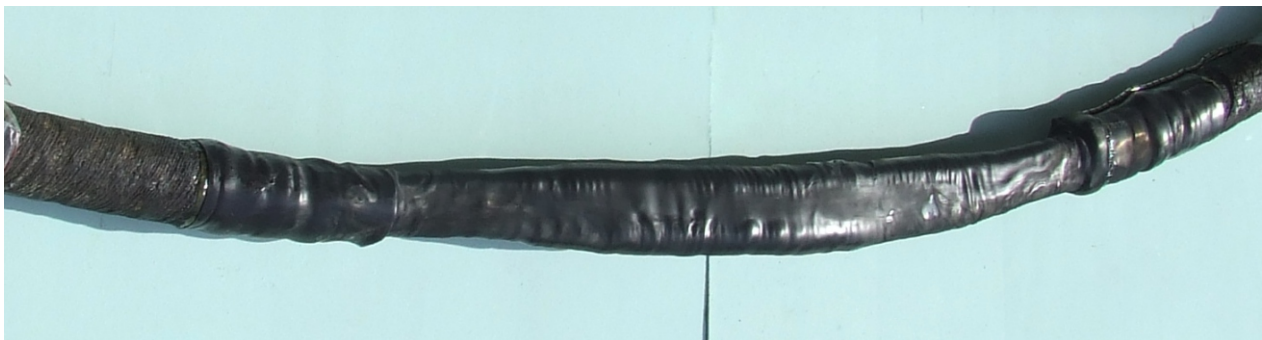
TECHNICAL PARAMETERS

- Working cores can be connected together by means of crimped terminals or terminals with secure lock bolts (supplied upon request)
- Cable insulation is restored with self-bonding adhesive tape for high voltages
- Non-metallic cable shields are restored with semi-conductive self-bonding adhesive tape
- Lead armours of cables are connected with PLC woven tape
- Outer sheath of the joint box is made of a heat-shrink stud tube or a heat shrink crust
- Each kit comprises all components and instruction manuals for making the joint
- The joint box can be connected to live voltage right after installation

SPECIFICATION

Type	Cross-section [mm ²]	Outer sheath
M-20(24)PT-1	35 – 70	heat shrink stud tube
M-20(24)PT-2	95 – 120	heat shrink stud tube
M-20(24)PT-3	150 – 240	heat shrink stud tube
M-20(24)PT-4	35 – 70	heat shrink crust
M-20(24)PT-5	95 – 120	heat shrink crust
M-20(24)PT-6	150 – 240	heat shrink crust

COMPLETED JOINT BOX



v.2