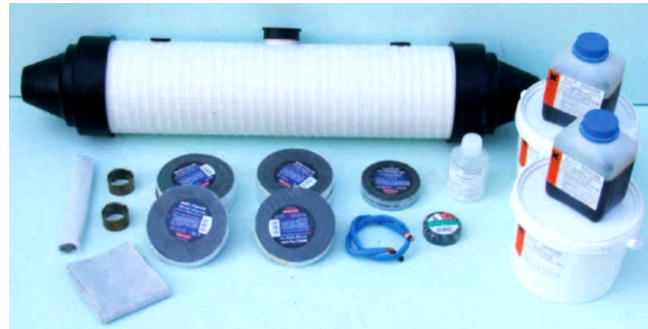


STRAIGHT THROUGH JOINT BOX SAKOP M-6 FOR VOLTAGES UP TO 3.6/6 kV

APPLICATION AREA

- The kit for connection of electric three core power cables, designed for rated voltage of 3.6/6 kV and sheathed in Y(A)KY(Fty) ... soft PVC insulation;
- Enables connection of cables with different cross-section of working cores ranging from 16 to 240 mm²
- Suitable for direct burying into ground



TECHNICAL PARAMETERS

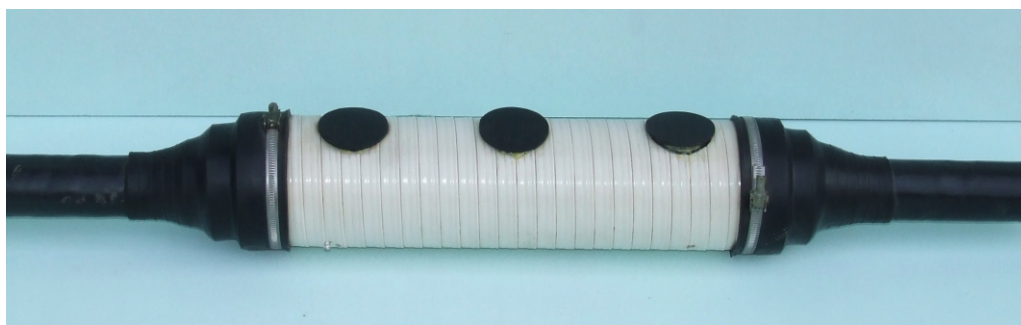
- Working cores can be connected together by means of crimped terminals or terminals with secure lock bolts (supplied upon request)
 - Cable insulation is restored by means of self-bonding adhesive tape for high voltages
 - Restoration of the return line:
 - cables with the return line made of Cu cores – by means of a crimped terminal or a terminal with secure lock bolts (supplied upon request);
 - cables with the return line made of Cu band – by means of PLC woven copper tape
- Cores in return lines of cables are connected together by means of crimped terminals or terminals with secure lock bolts (supplied upon request);
- Outer sheath is made of flame retardant soft PVC and flame-retardant rubber whilst the box is filled with two-component polyurethane compound
 - Each kit comprises all components and instruction manuals for making the joint
 - The joint box can be connected to live voltage right after installation

SPECIFICATION

Type	Cross-section [mm ²]	Outer sheath L[mm], DI (D _{wew}) [mm]
SAKOP M-6/1	16 – 70	L – 450, DI (D _{wew}) – 80
SAKOP M-6/2	95 – 120	L – 550, DI (D _{wew}) – 90
SAKOP M-6/3	150 – 240	L – 800, DI (D _{wew}) – 125

For larger cross-sections of cables please consult the manufacturer

COMPLETED JOINT BOX



v.2