

KT TIME DELAY RELAY

TECHNICAL PARAMETERS

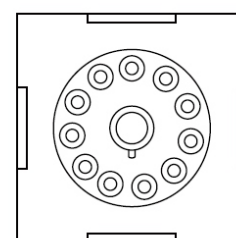
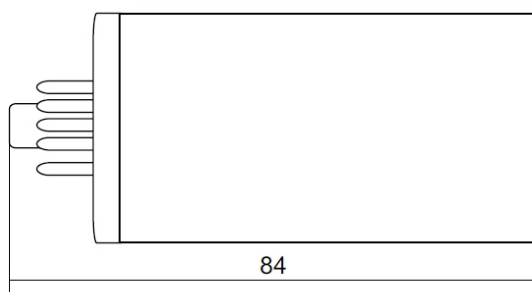
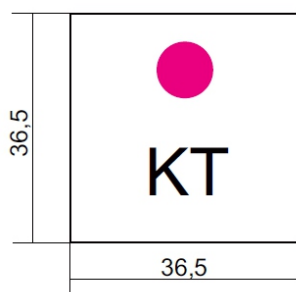
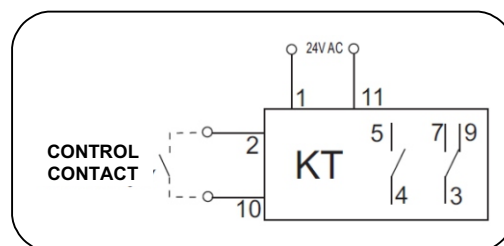
- Power supply voltage U_n 24 V AC
- Permissible fluctuations of power voltage: $0.8 \div 1.2 U_n$
- Frequency: 50 Hz
- Number and types of contacts: 2 NO, 2 NC, 2 relay (toggled)
- Rated /Maximum voltage across contacts: 250V /440V
- Rated load current for DC and AC loads AC1: 8A/250V AC
DC1: 8A/24V DC
- Continuous current rating of contacts: 8 A
- Delay time: 7 s
- Operation temperature: $-10 \dots +55^\circ\text{C}$
- Sockets: Gz11, G11



APPLICATION AREA

The KT relay is designed for operation in electric equipment of normal design with the IP54 index of protection.

In electric circuits of the WS... switches it counts down time delays in circuits of the main switch to enable issuing of preceding signals according to the predefined sequence.



v.2