

LEAKAGE INTERLOCKING RELAY TYPE K-16

APPLICATION AREA

The K-16 relay is designed for installation in contactor switches of normal design, such as devices of the WS... types manufactured by SAKOP. In case of WSN... switches the relay collaborates with the V2 module of diodes. The combination made up of K16 and V2 devices is designed to detect deteriorated condition of insulation between phase lines and earth in three-phase networks with insulated neutral point and with the rated voltage up to 500V. The relay is able to monitor de-energized circuits also when power voltage is off.

DESIGN

The K-16 leakage interlocking relay is encapsulated in an enclosure with the IP-20 index of protection and suitable for mounting on the TS-35 DIN rail. The enclosure is provided with plugged connectors to communicate with the following circuits:

- Power supply 24V AC: terminal 6-7;
- Functional contacts:
 - terminals 1, 2, 3 (relay /toggle type),
 - terminals 4, 5 (NO).
- Measuring inputs:
 - terminals 8, 10 (interlocking module).

INSTALLATION

The enclosure of the relay is snap-on mounted on a standard top hat mounting rail of 35 mm size. Terminals of the relay are to be connected to the monitored system according to the application diagram with use of LY-1.5...2.5 mm² conductors (lug terminals must be squeezed beforehand on bare ends of connecting conductors).

TECHNICAL PARAMETERS

- Rated power supply voltage 24 V AC
- Interlock input resistance 25 kΩ ± 20%
- Rated voltage across contacts 250 V AC
- Rated continuous current of contacts 6 A
- Rated insulation voltage 250 V AC
- Dimensions (W x H x D) 45 x 75 x 105 mm
- Index of protection IP 2

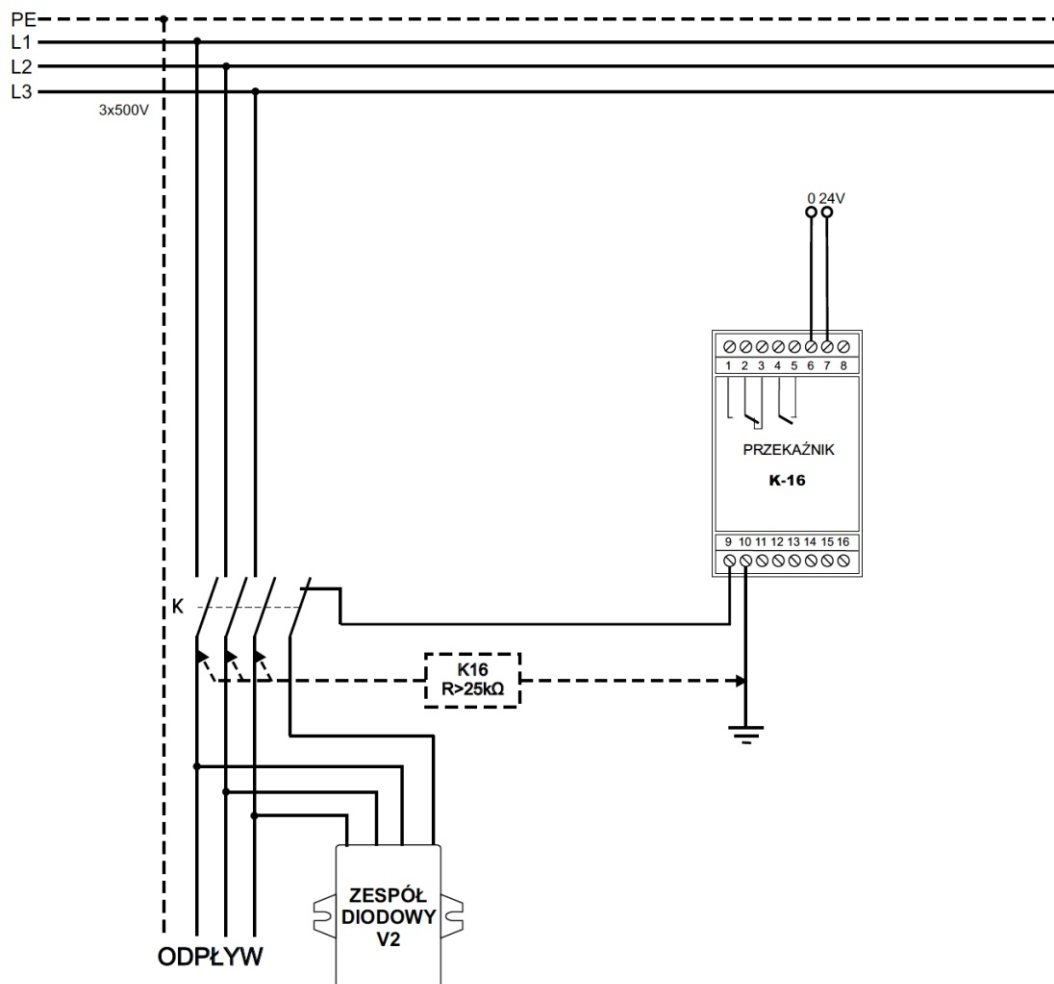


Fig. 1 Application diagram

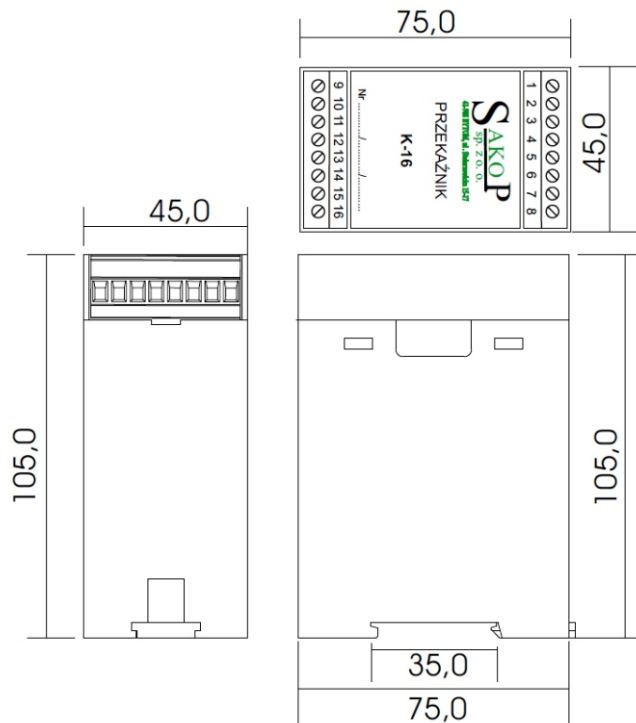


Fig. 2 Dimensional drawing